



MATATIELE
LOCAL MUNICIPALITY

MATATIELE LOCAL MUNICIPALITY

Research and analysis of ward profiling: Ward based plans

WARD 18

May 2018

TSHANI
CONSULTING C.C.

1. Table of Contents

1. Executive Summary.....4

2. Methodology.....4

3. Ward Overview.....5

4. Socio Economic Analysis6

5. Built Environment Assessment..... 11

6. Current Projects 14

7. Ward Needs And Priorities 14

8. Stakeholders Within Ward..... 15

9. Social Challenges..... 15

List of Tables

Table 1: SWOT Analysis – Community Based Planning Program 2017 (Data Collection).....5

Table 2: Major Event within the Ward – Community Based Planning Program 2017 (Data Collection)5

Table 3: Table 2: Programmes within the Ward – Community Based Planning Program 2017 (Data Collection).....5

Table 4: Table 2: Population Size and Distribution within the Ward – Community Based Planning Program 2017 (Data Collection).....6

Table 5: Social Grant Dependency within Ward - Community Based Planning Program 2017 (Data Collection).....7

Table 6: Child and Female Headed Households within the Ward - Census 20118

Table 7: Education Facilities within Ward - Community Based Planning Program 2017 (Data Collection).....9

Table 8: Churches and Religious Organisations within the Ward - Community Based Planning Program 2017 (Data Collection).....9

Table 9: Health Care Facilities: Community Based Planning Program 2017 (Data Collection)9

Table 10: Community Halls - Community Based Planning Program 2017 (Data Collection).....9

Table 11: Economic Activity - Community Based Planning Program 2017 (Data Collection)..... 10

Table 12: Tourism Activities - Community Based Planning Program 2017 (Data Collection)..... 10

Table 13:Agricultural Activities: Community Based Planning Program 2017 (Data Collection)..... 10

Table 14:Products produced within the Ward 10

Table 15:Existing Skills within the Ward: Community Based Planning Program 2017 (Data Collection) ... 11

Table 16:Household Access to Water- Community Based Planning Program 2017 (Data Collection) 11

Table 17:Household Access to Sanitation - Community Based Planning Program 2017 (Data Collection) 12

Table 18:Main Sources of Energy - Community Based Planning Program 2017 (Data Collection) 13

Table 18:Roads and Bridges within Ward - Community Based Planning Program 2017 (Data Collection) 14

Table 20:Ward needs and Priorities - Community Based Planning Program 2017 (Data Collection)..... 15

Table 21:Stakeholders Within Ward - Community Based Planning Program 2017 (Data Collection) 15

Table 22:Social Challenges Within Ward - Community Based Planning Program 2017 (Data Collection) 15

List of Figures

Figure 1: Gender Distribution6

Figure 2: Age within Ward Distribution – Census 20117

Figure 3: Language Proficiency within Ward – Census 20117

Figure 4: Gender of Household Head - Census 20118

Figure 5: Types of Dwelling within Ward – Census 20118

Figure 6: Individual Monthly Income - Census 2011 10

Figure 7: Access to Solid Waste Removal - Census 2011 11

Figure 8: Source of Water supply within the Ward - Community Based Planning Program 2017 (Data Collection) 12

Figure 9: Access to Sanitation Facilities – Census 2011 12

Figure 10: Source of Energy within the Ward - Census 2011 13

List of Plans

Plan 1: Ward 18 Locality4

Plan 2: Education Facilities.....9

Plan 3: Health Care Facilites.....9

Plan 4: Access to Sanitation Facilites – Census 2011 13

Plan 5: Access to electricity for Lighting within the Ward - Census 2011 13

Plan 6: Roads and Bridges within the Ward - MLM GIS 14

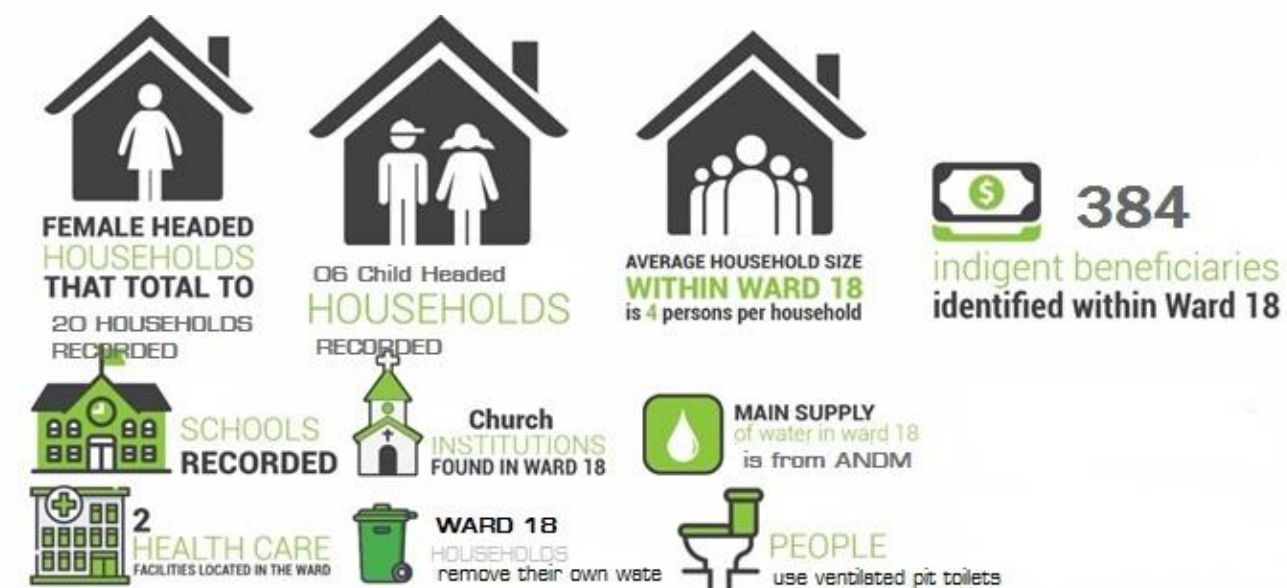
1. Executive Summary

Ward 18 is located on the southern edge of the MLM. Ward 18 is surrounded by wards 22, 26, 17 and 23 on the west, north and eastern directions. As depicted on the map, ward 18 comprises of Tshisa, Bubesi, Moyeni, Hillside, Nkungwini, Zipampirini, Kwaqili, Mwrabo, Myemaneni, Sidakeni, Fiva, and Kesa. As per census 2011 this ward is made up of approximately 7 254 people in total and 2 116 number of households. The most spoken language in Ward 18 is isiXhosa, the gender split within Ward 18 is made up of 52% female and 48% males.

The dominant age group in Ward 18 is Age group between 00-019 years. This ward certainly needs to invest more in youth programmes, be it education or other programmes because this ward reflect a very youthful community.

There are two health care facilities within the ward. First one is Nyaniso Clinic in Hillside Village, the second one is a Mobile clinic in Tshisa Village, these clinics provides basic health services such as family planning, basic check-ups and immunization among others. Ward 18 has one (1) Community hall (Myamaneni) within the ward. Out of 13 villages only two (2) villages have electricity which is Tshisa and Bubesi (on progress). This ward use solar a source of energy this shows a large backlog with regards the Electricity.

In terms of water and sanitation, the District Municipality (ANDM) currently provides water and sanitation to Matatiele Local Municipality area. There is a large backlog with regards the provision of water and sanitation. There is a large backlog with regards the provision of water, out of 15 villages in the ward 7 villages have no access to water, as a results a large number of people having to walk at least 1km away to source water from the dams or streams.

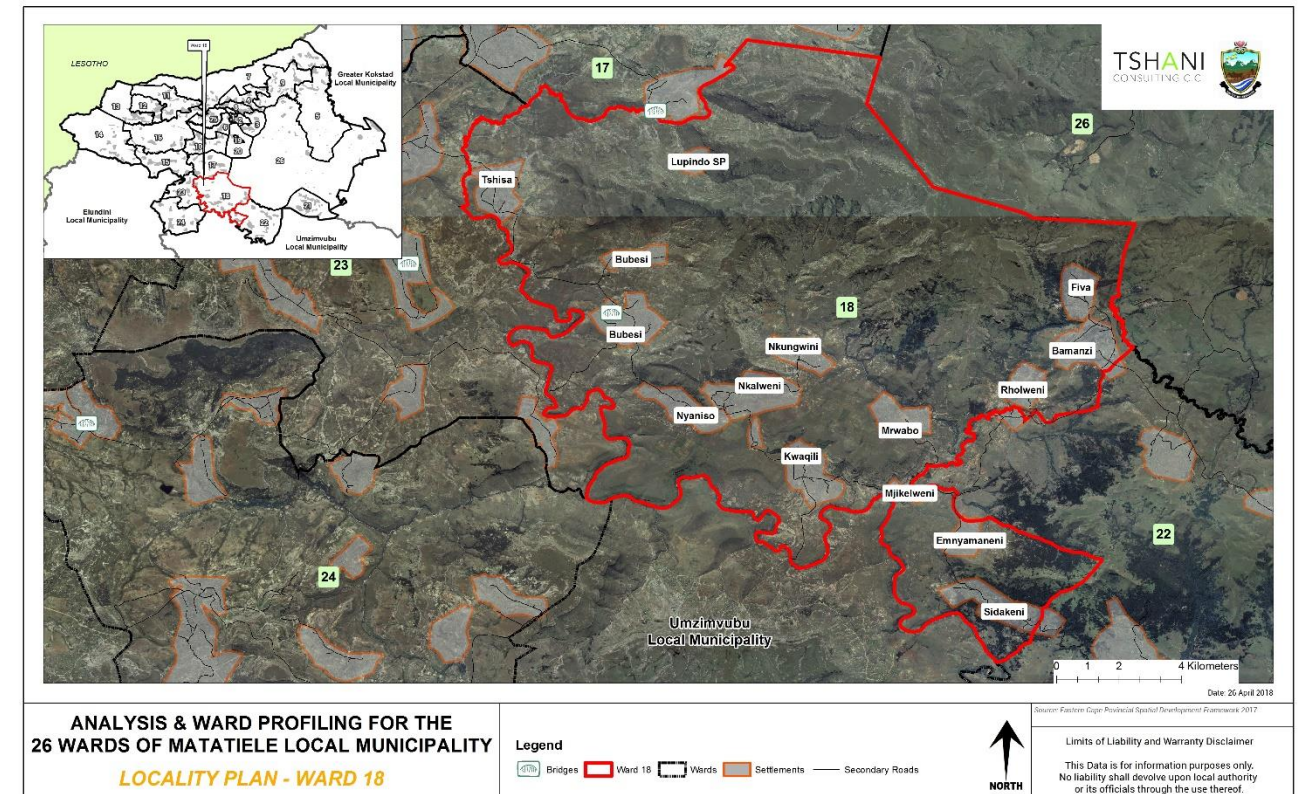


1.1. Introduction

The Matatiele Local Municipality (MLM) appointed Tshani Consulting CC for the analysis and ward profiling for the 26 wards within MLM.

The purpose of this report is to review the current the Ward Based Plan prepared for Ward 18 and the LM that was developed in 2014. Through this exercise the ward profiling ensures the prioritisation of projects and channeling such projects into places of need.

The report serves as the analysis and profiling of Ward 18.



Plan 1: Ward 18 Locality

2. Methodology

The methodology utilised for the analysis and profiling in this report was derived as follows:

1. Synthesis an interpretation of questionnaires and community feedback;
2. Translated information into a Strength, Weakness, Opportunities and Threats analysis;
3. Conducted a verification process on the populations profiles, social profile and economic profile using Census 2011 data which was conducted at a Ward level;
4. A detailed GIS mapping exercise was completed in order to translate the findings into spatially represented outcomes;
5. Ward needs, and priorities were identified for the wards;

6. Needs identified for the ward was translated into projects and a consolidated implementation plan together within financial implications was completed.

The analysis of Ward 18 also took its '**point of departure**' from the primary data which was available from the data collection and community consultation completed in the previous phase

3. Ward Overview

The section below highlights the specific sections which were analysed in relation to Ward 18.

4.1. SWOT Analysis

The SWOT analysis was developed, through a series of engagement sessions with the local community and traditional leadership of Ward 18, by the municipality.

STRENGTHS	WEAKNESSES
<ul style="list-style-type: none"> Grazing Land Water Sources Arable land Growing youthful population Clinic Agricultural school 	<ul style="list-style-type: none"> Poor road conditions Area is located away from main economic centres i.e. Matatiele town Unemployment Lack of skills
OPPORTUNITIES	THREATS
<ul style="list-style-type: none"> Indigenous plants (Aloe for Medication) Food Production Potential for Maize Farming 	<ul style="list-style-type: none"> increase in crime (Theft) violence (Rape) alcohol and substance abuse area prone to disasters including drought veld fires

Table 1: SWOT Analysis – Community Based Planning Program 2017 (Data Collection)

4.2. Major events within the Ward

The table below illustrates the major events which /happened within Ward 18 over couple of years ago:-

EVENT/ OCCURANCE	YEAR	IMPACT
SASSA Outreaches	2015	Food Parcels for the poor and destitute.
Safety and Liaison Outreach	2016	Crime Reduction
Provincial Education	2017	Opening of agricultural School, Job Creation, Farming opportunities, Learners taken through agricultural studies
Premier Visit	2012	Water tanks, clothing for the destitute
Opening of Moorosi agricultural school	2016	This is a first in the entire municipality, its located in ward 18 and thus benefits the whole municipality

Table 2: Major Event within the Ward – Community Based Planning Program 2017 (Data Collection)

4.3. Services/ Infrastructure and Programmes Within the Ward Within The 5-Year Period (2012-2016)

The Community Based Planning Programme study conducted in 2017 has discovered some infrastructure investments that have taken place in ward 18. These projects have indeed benefited the ward and the entire municipality. The table below illustrates the infrastructure and programmes happened within the specified period:-

Type	Year	Beneficiaries	Status / present condition	Impact
Solars	2015	1878 Households	Not maintained	Bettering lives, households now have an alternative lighting energy
Fiva A/R	2014	259 Households	Needs maintenance	Has improved Accessibility to the village. However it is now needs to be maintained
Sanitation	2014	938 Households, 6 villages	Good	Reduction of health hazards
Nkungwini A/R	2011	119 Households	Very Bad	Has improved Accessibility to the village. However it is now needs to be maintained
Sidakeni A/R	2015	62 Households	Not Completed	Has improved Accessibility to the village. The project is not complete
Nyaniso Clinic	2015	Whole ward	Not completed with renovations	To improve and take care of people's health
Fobane Water Scheme	2009	218 households	Not Completed	Clean water
Mashu Village	2017	219 Households	Good	Better Lives
Qili Diping Tank	2014	314 Households	Good	Stock Caring
Tshisa Field Fencing	2015	218 Households	Good	Famine Relief
Fiva field Fencing	2013	259 Households		Assisted with protecting fields from stray animals
Moorosi Agricultural High Schools	2017	Households	Requires economic Studies, Farm viability	Opening of agricultural School, Job Creation, Farming opportunities, Learners taken through agricultural studies.

Table 3: Table 2: Programmes within the Ward – Community Based Planning Program 2017 (Data Collection)

4. SOCIO ECONOMIC ANALYSIS

5.1. Population Profile

The sub sections below provide an analysis of the population profile of Ward 18.

5.1.1. Population Size and Distribution

The total population of Ward 18 is 7 254.

LIST OF VILLAGES/ LOCATIONS/SUB AREAS	OTHER NAME/S FOR THE VILLAGE/ LOCATION	NUMBER OF HOUSEHOLDS			POPULATION SIZE (NUMBER OF PEOPLE)		
		Community Feedback	Census 2011	Projected Household by 2050 growing at 0.3% Per Annum	Community Feedback	Census 2011	Projected Population by 2050 growing at 0.4% Per Annum
Tshisa	-	219			749		
Bubesi	-	547			1331		
Mashu	Nkuphelweni	209			537		
Moyeni	Masimangeni	67			293		
Hillside	Mrwatyeni	377			744		
Nkungwini	Romeni	117			488		
Zipampirini	-	27			213		
Qili	Njkweleni Section	218			611		
Mrwabo	-	85			301		
Myemaneni	Bororweni or Nomgavu	477			941		
Sidakeni	-	62			216		
Fiva	-	289			566		
Kesa	Nyamende	44			194		
Total Population - Ward 18:		2738	1917	2116	7184	7254	8242

Table 4: Table 2: Population Size and Distribution within the Ward – Community Based Planning Program 2017 (Data Collection)



5.1.2. Gender Distribution

The gender distribution in ward 18 reflects a slight difference between the two genders. The female gender constitutes 52% while male gender constitutes 48%. These facts represent a similar trend in the MLM. There seem to be a growing number of women within the ward which necessitates the provision of support for increased fertility demands and maternal support. The figure below illustrates the gender distribution in ward 18, expressed in percentage form:-

Gender Distribution

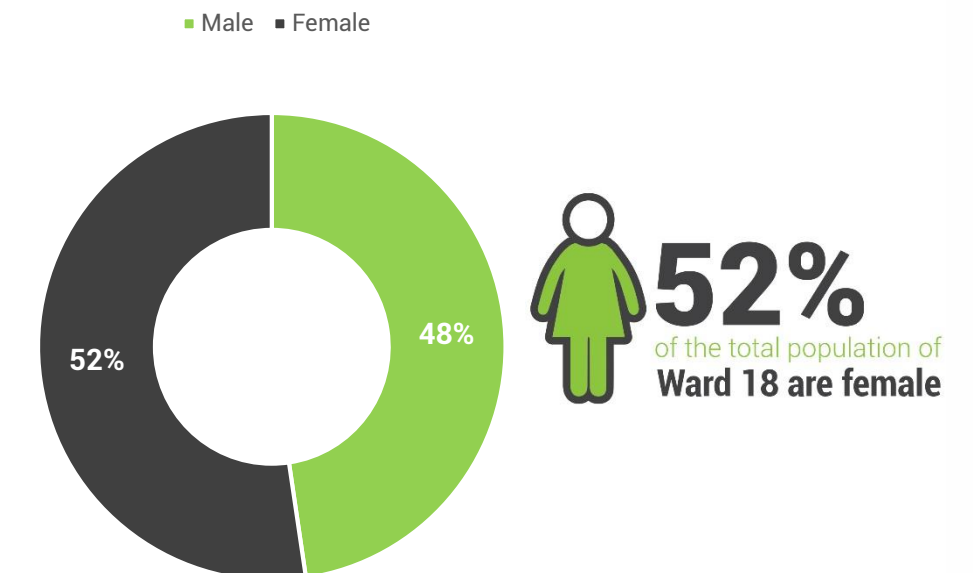


Figure 1: Gender Distribution

5.1.3. Age Groups

Age group between 00-04 years dominates in ward 18. There seem to be a regular population growth between the ages of 00-19 years. This ward certainly needs to invest more in youth programmes, or other programmes because these facts reflect a very youthful community. The figure below illustrates the age groups within ward 18:-

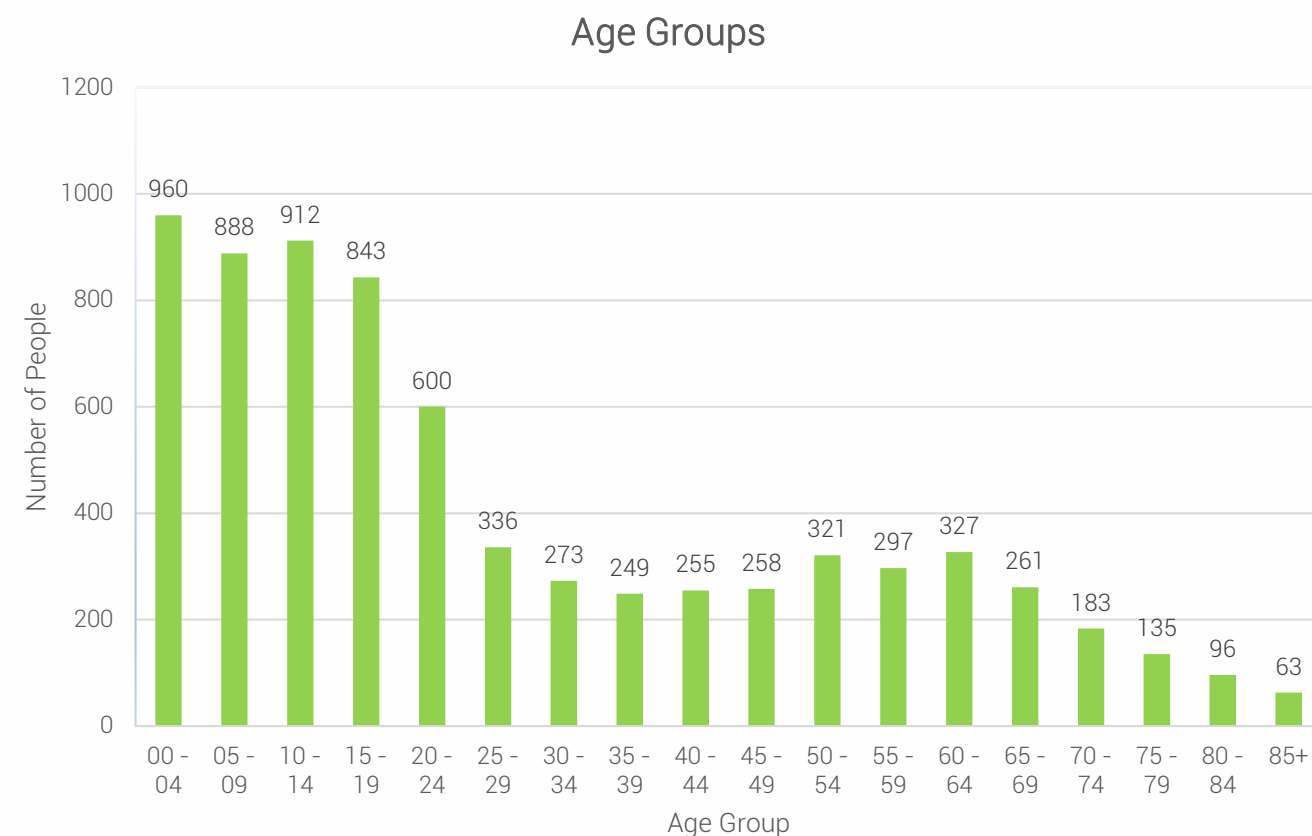


Figure 2: Age within Ward Distribution – Census 2011

5.1.4. Language Distribution

According to the figure illustrated below, isiXhosa is by far the most spoken language in Ward 18 followed by English.

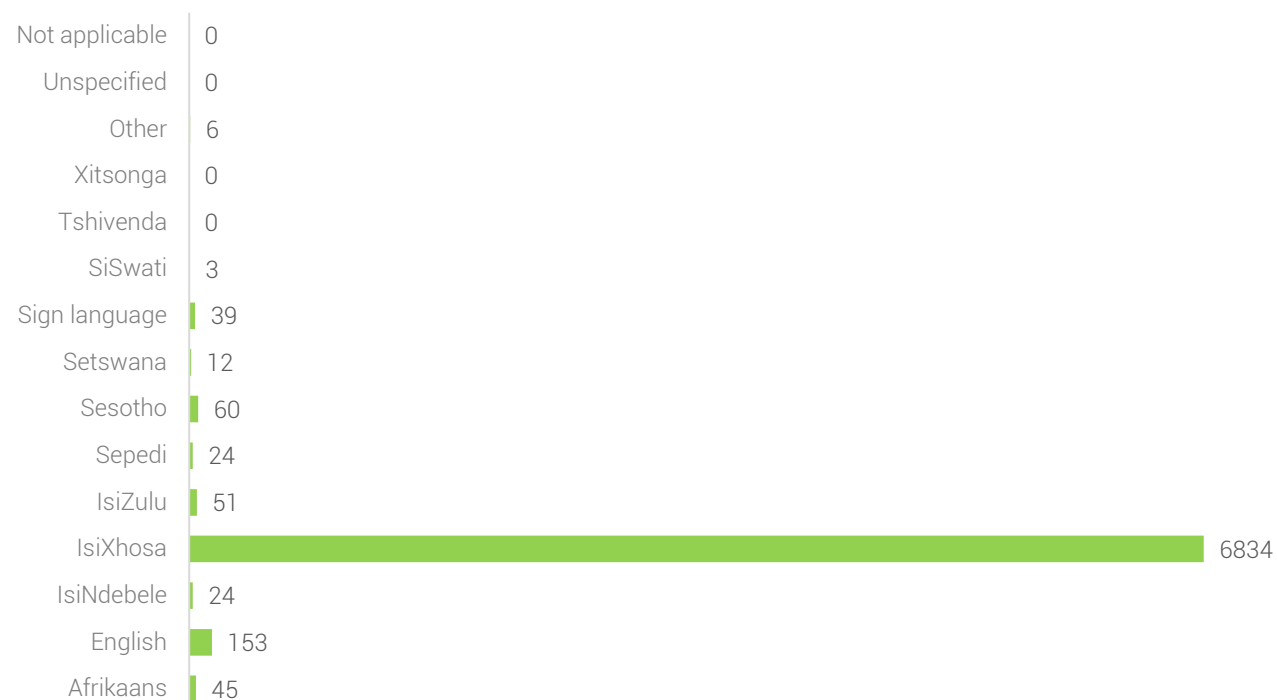


Figure 3: Language Proficiency within Ward – Census 2011

5.1.5. Social Grants

The community survey did not record the social grant, however there are a recipients of social grants within the whole ward given that the dominating age group in the ward is people less than the 18 years of age.

TYPE OF SOCIAL ASSISTANCE OFFERED	NUMBER OF HOUSEHOLDS
	Community Feedback
Child support grant	-
Old age	-
Disability grant	-
Foster care grant	-
Grant in aid	-
Stress relieve grant	-
Food parcels	-

Table 5: Social Grant Dependency within Ward - Community Based Planning Program 2017 (Data Collection)

5.1.6. Indigent Support

A rural municipality with a high dependency rate on social assistance; MLM has a large number of indigent households. Particularly for this ward 18. Although the number is high, it is only a few households that receive indigent supports from the municipality. The challenges that affect to the provision of such support, include beneficiaries with no properly documents, challenges with verification of beneficiaries amongst other issues. In this ward. The current indigent support register show that only 384 beneficiaries registered in this ward.



5.2. Household Profile

The section below details the households within Ward 18 in terms of their size, gender of heads of households and distribution.

5.2.1. Household Size

The household within Ward 18 include an average of 4 persons per household

5.2.2. Heads of Households

The Community Based Plan Programme 2017 (Data Collection) fundings have shown records of 6 child headed households estimation and of 20 female headed households estimation within ward 18.

Villages	Child-Headed households		Female-Headed Households	
	Community Feedback	Census 2011	Community Feedback	Census 2011
Tshisa	-		-	
Fiva	-		-	
Myemaneni	-		-	
Hillside	-		-	
Bubesi	-		-	

Nkungwini	6		20	
Total	6	15	20	1035

Table 6: Child and Female Headed Households within the Ward - Census 2011



The figure presented below illustrates that approximately 54% of households in Ward 18 are headed by women.

Gender of Household Head

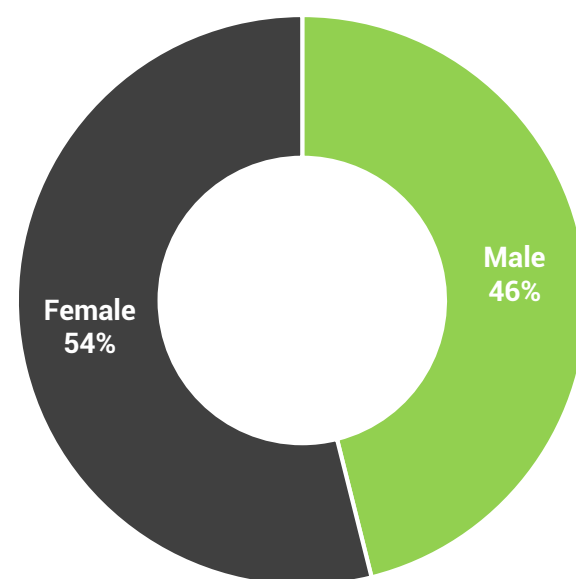


Figure 4: Gender of Household Head - Census 2011

5.2.3. Household Dwelling types

The majority of people in Ward 18 live in a brick/concrete structure. A significant number also live in traditional dwellings.

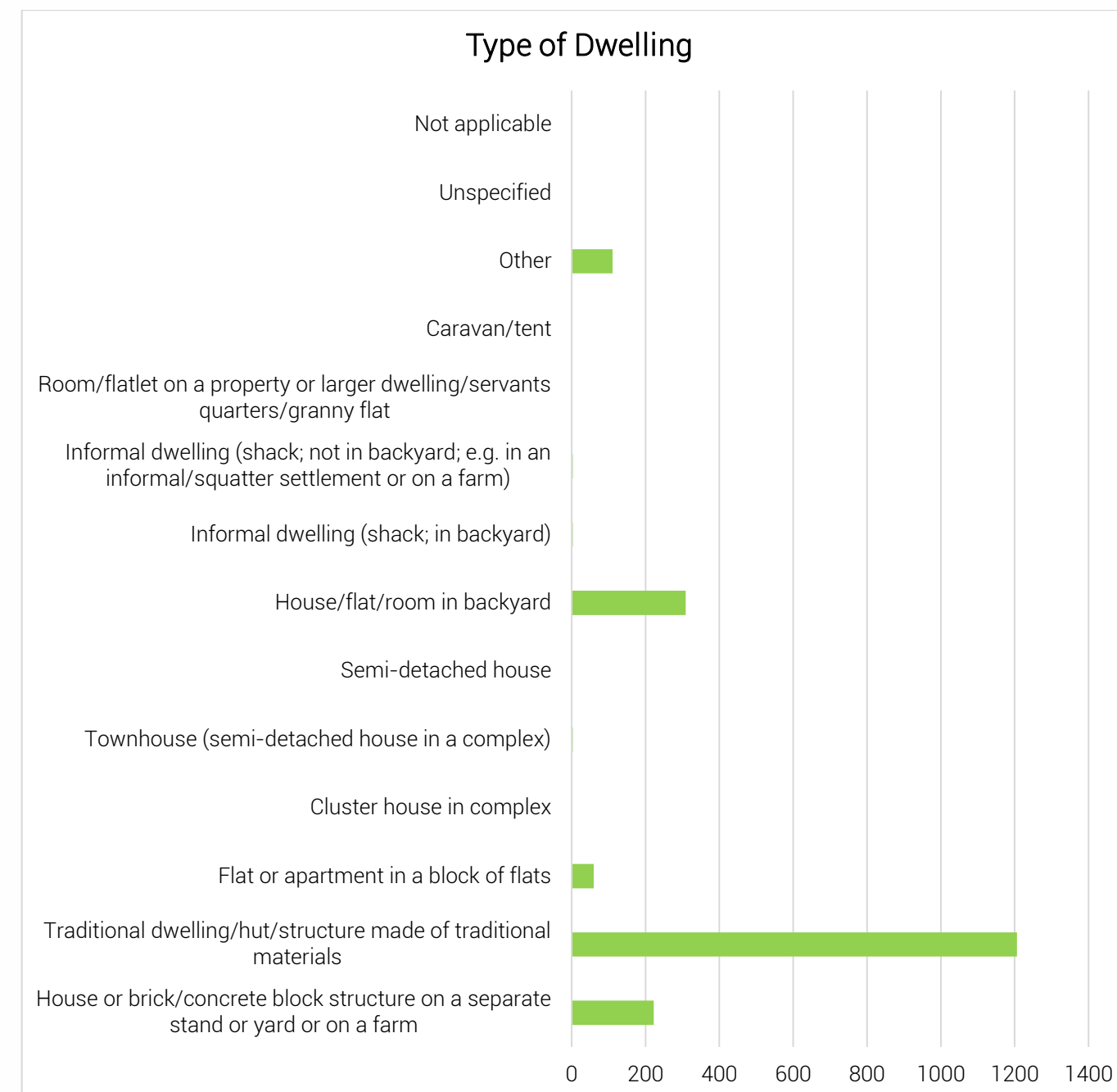


Figure 5: Types of Dwelling within Ward – Census 2011

5.3. Social Profile

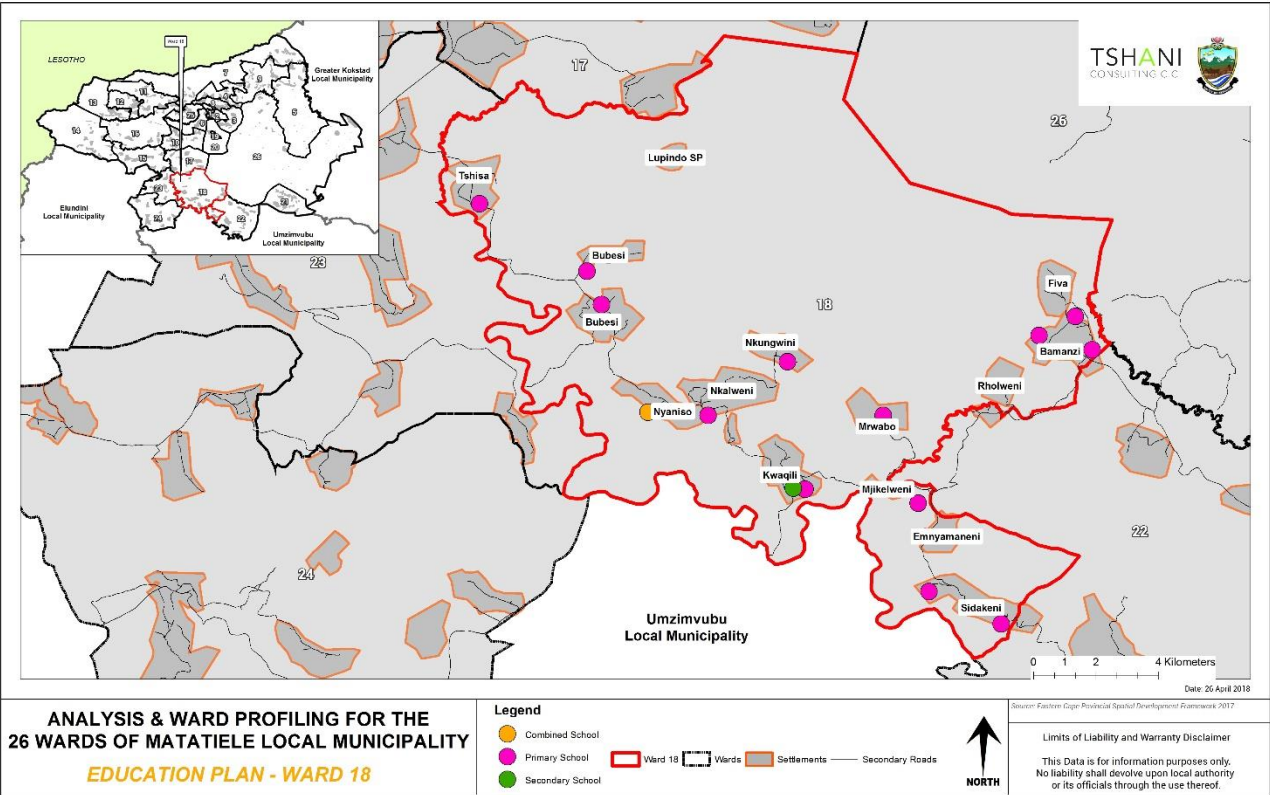
5.3.1. Education Facilities: Community Feedback

The range of schools identified in the table below was developed from the community feedback sessions.

NAME	TYPE	AREA LOCATED	NUMBER OF LEARNERS
Nyaniso	Pre-school	Hill side	33
Tshisa	Pre-school	Tshisa	19
Solozi	Pre-school	Fiva	61
Qili	Pre-school	Qili	24
Bubesi	Pre-school	Bubesi	
Tshisa	Primary School	Tshisa	320
Bubesi	J.S.S	Bubesi	744

Table 7: Education Facilities within Ward - Community Based Planning Program 2017 (Data Collection)

5.3.2. Education Facilities



Plan 2: Education Facilities

Churches and Religious Organisations: Community Feedback

The range of religious facilities identified in the table below was developed form the community feedback sessions. These facilities are well spread out across the Ward. *Some of the churches do not have the structures, as they operate within the households.*

NA ME	LOCATION/AREA	NUMBER
Methodist church		5
Anglican church		6
Moravian church		7
Witness of God		1
Roman		2
Zion		All villages
Presbyterian church		2
Apostolic		4

Table 8: Churches and Religious Organisations within the Ward - Community Based Planning Program 2017 (Data Collection)

5.3.3. Health Care Facilities: Community Feedback

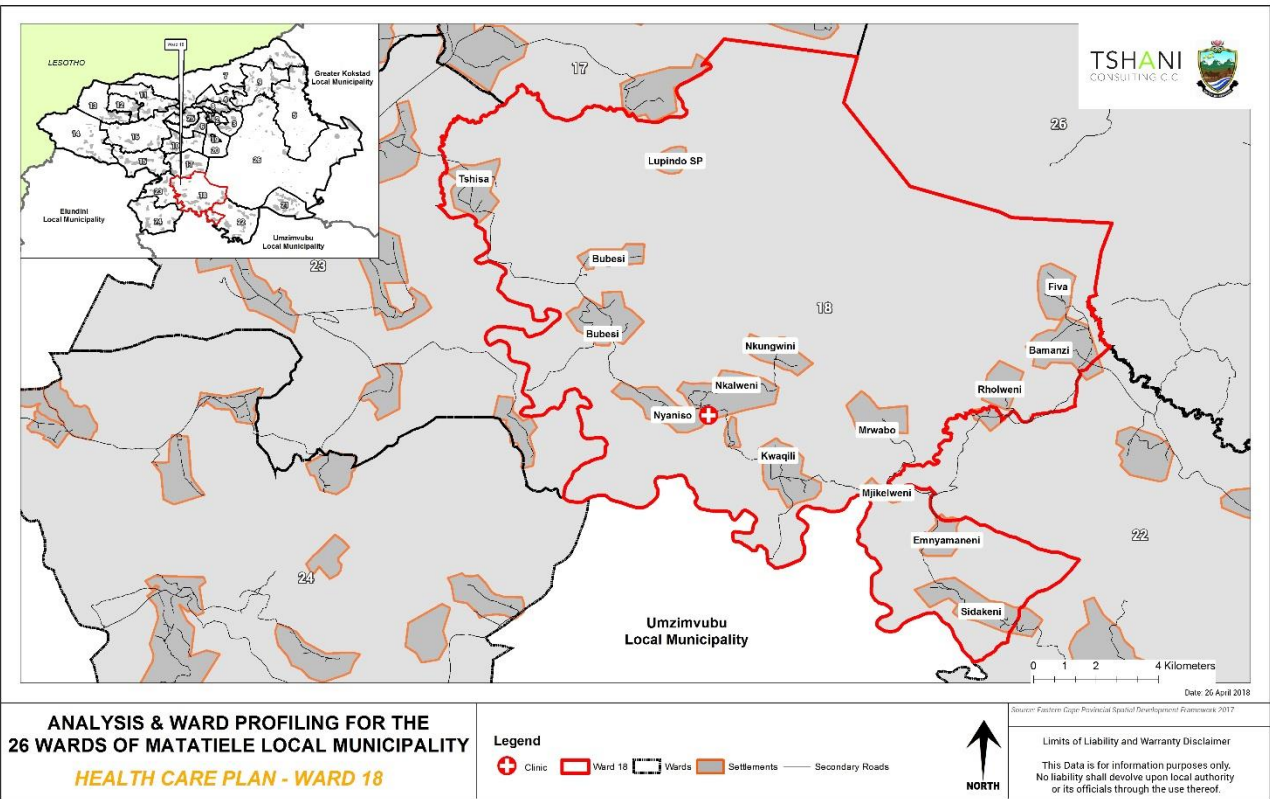
The community feedback identified 2 health care within Ward 18 first one is a clinic located in Nyaniso village the second is the mobile clinic in Tshisa village. These facilities intended to service Ward 18 and neighbouring wards.

Name and type	Area located	Primary services provided
Nyaniso Clinic	Hillside	Primary Health Care
Mobile Clinic	Tshisa	Primary Health Care

Table 9: Health Care Facilities: Community Based Planning Program 2017 (Data Collection)

5.3.4. Health Care Facilities

The map below spatially identified the clinic which is located within Ward 18.



Plan 3: Health Care Facilities

5.3.5. Community Hall: Community Feedback

Name and type	Area located
Myemaneni Community Hall	Myemaneni

Table 10: Community Halls - Community Based Planning Program 2017 (Data Collection)

5.4. Economic Profile

5.4.1. Individual Monthly Income

Over half of the population of Ward 18 receives less than R400 or no income monthly. This community has a high number of low income earners.

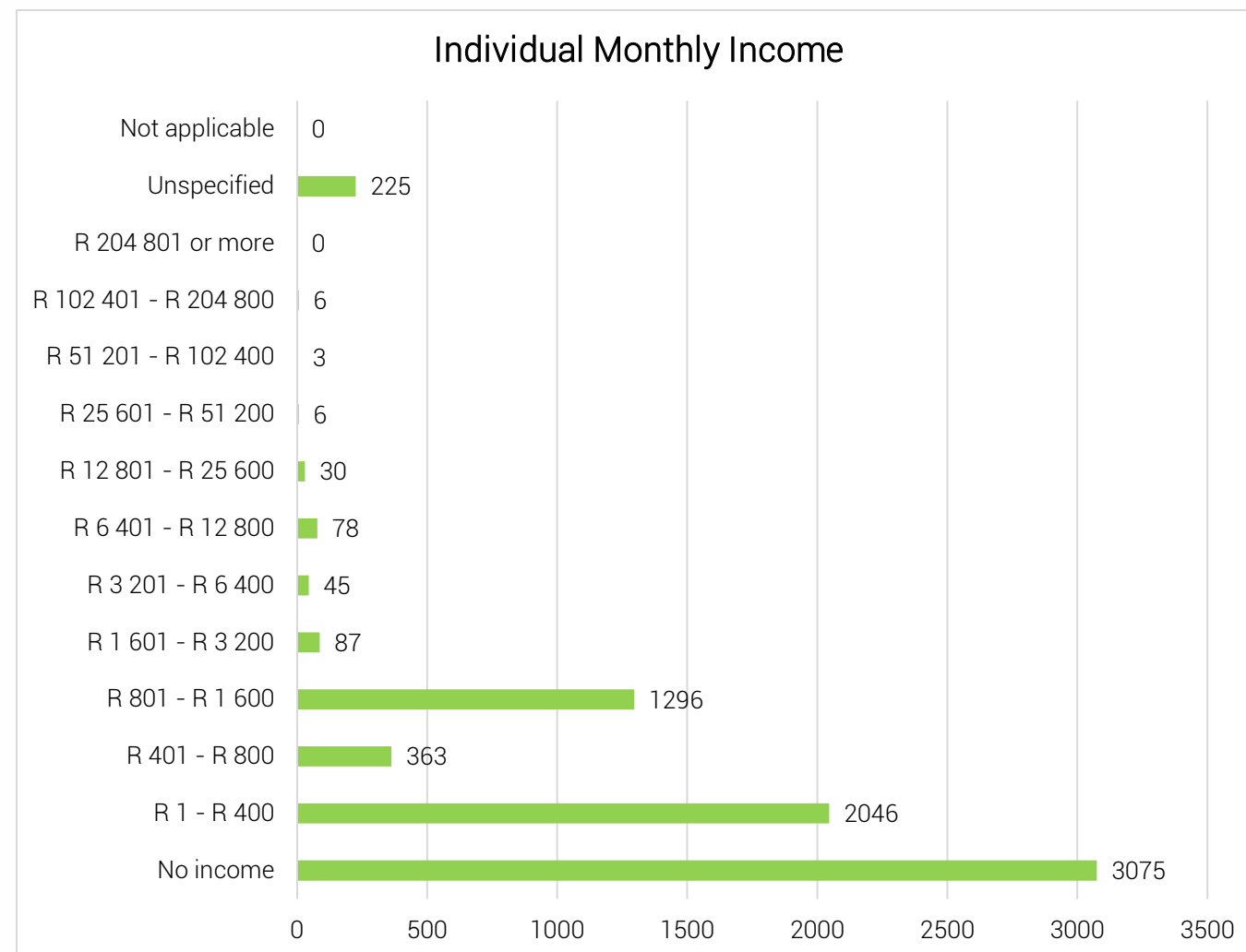


Figure 6: Individual Monthly Income - Census 2011

5.4.2. Economic Activities: Community Feedback

It is noted that Spaza shops and General Dealers are prominent in Ward 18.

RETAIL(INDICATE SHOPS, SPAZA SHOPS, CAFÉ, TAVENS, SALONS, ETC)	
TYPE	LOCATION
General Dealer rented by Chinese	All Villages
Spaza	All Villages
Four Taverns	Tshisa, Bubesi, Moyeni and Fiva

Table 11: Economic Activity - Community Based Planning Program 2017 (Data Collection)

5.4.3. Tourism Activities

There is 1 tourism site in Ward 18 although it is regarded as undeveloped. The indication of tourism facilities present indicates that there is room for growing based on tourism within Ward 18.

TOURISM (INDICATE B&B'S, HOTELS, ATTRACTION SITES, ETC)	
TYPE	LOCATION
Underdeveloped Attraction Sites	Tshisa

Table 12: Tourism Activities - Community Based Planning Program 2017 (Data Collection)

5.4.4. Agricultural Activities

The community of Ward 18 mainly practises subsistence farming for their agricultural products.

TYPE OF PRODUCTS	FOR HOUSEHOLD CONSUMPTION	FOR SELLING TO THE COMMUNITY
Cattle	Yes	-
Sheep	Yes	-
Goats	Yes	-
Horses	Yes	-
Poultry	Yes	-
Vegetables	Yes	-
Fruits	Yes	-
Grains	Yes	-

Table 13: Agricultural Activities: Community Based Planning Program 2017 (Data Collection)

5.4.5. Products Produced in Wards

The table below indicates that products such as livestock and maize are available within the ward and are locally produced. Such individuals responsible for these activities should be better supported and encouraged to expand.

TYPE OF PRODUCTS	AREAS / VILLAGES	FOR HOUSEHOLD CONSUMPTION	FOR SELLING TO THE COMMUNITY
Vegetables	All villages	yes	yes
Maize	All villages	yes	yes
Livestock	All villages	yes	yes

Table 14: Products produced within the Ward

5.4.6. Existing Skills

The ward constitutes of some diverse skills which is a major asset for the ward. Such individuals need to be further trained and opportunities to mentor other unemployed individuals within the community should be encouraged. The entrepreneurs within ward should also be given better access to market opportunities. There a broad range of professionally qualified individuals whom also are major assets for Ward 18.

TYPE OF SKILLS	EXISTING (INDICATE WITH YES/NO)	TYPE OF SKILLS	EXISTING (INDICATE WITH YES/NO)
Carpenters	Yes	pottery	Yes
Plumbing	Yes	teachers	Yes
Builders	Yes	Police	Yes
Artists	Yes	Health officials	Yes
Gardening	Yes	Accountants	Yes
Cooking	Yes	Engineers	Yes
Sewing	Yes	Lawyers	Yes
Writing	Yes	Other (indicate)	
Drivers	Yes		
Farmers			

5. BUILT ENVIRONMENT ASSESSMENT

5.1. Household Access to Waste Removal

The Municipality does not provide the waste collection removal in this ward, hence ward 18 people dispose their own waste.

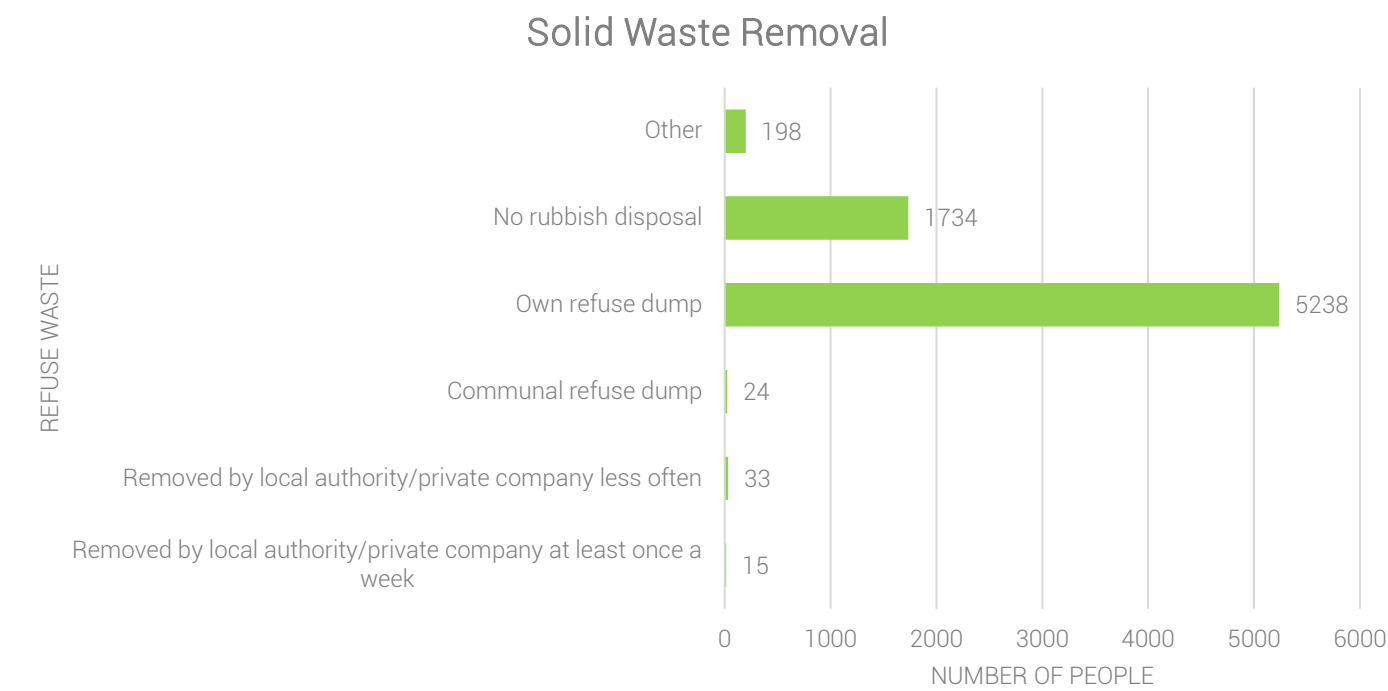


Figure 7: Access to Solid Waste Removal - Census 2011



5.2. Household Access to Water

The main supplier of water is the District Municipality (ANDM) which currently provides water to Matatiele area. There is a large backlog with regards the provision of water as a results a large number of people having to walk at least 1km away to source water from the dams or streams as shown below table. Within the whole ward, 07 villages have no access to water even villages with community taps the water does not come out as the scheme is too old and it does not cover the whole ward 18.

VILLAGE/LOCATION	COMMUNITY TAPS	WATER-INSIDE YARD	WATER-INSIDE HOUSE	BOREHOLES	DRAW WATER FROM STREAMS, DAMS, RIVER
Tshisa	None				Yes
Bubesi	6				Yes
Bororweni	None				Yes
Nongavu	None				Yes
Moyeni	3				Yes
Hillside	12				Yes
Mrwatyeni	2				Yes
Nkungwini	4				Yes
Zipampirini	2				Yes
Qili	5				Yes
Mrwabo	On progress				Yes
Myemaneni	None				Yes
Sidakeni	3				Yes
Fiva	4				Yes
Kesa	None				Yes

Table 16:Household Access to Water- Community Based Planning Program 2017 (Data Collection)

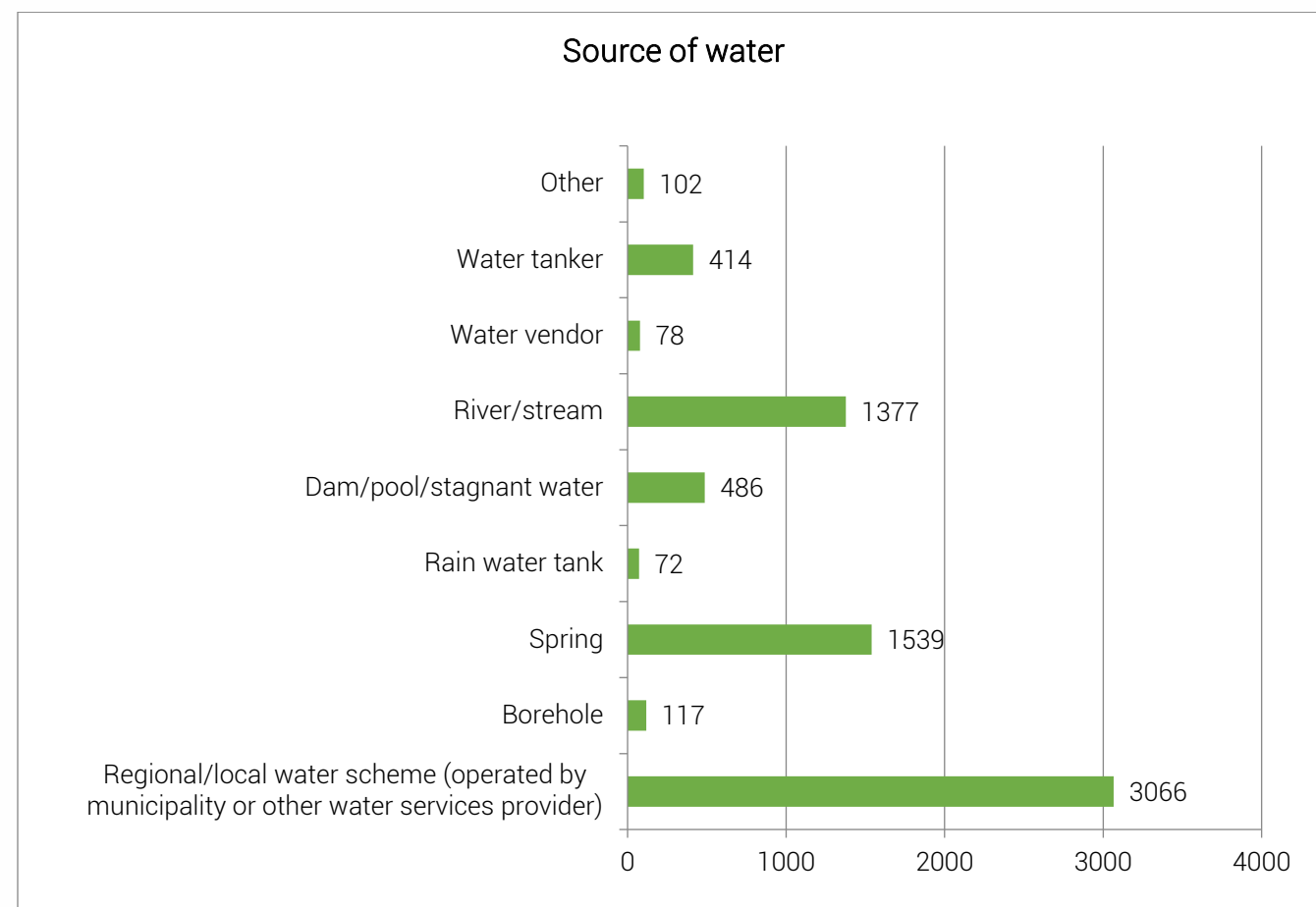


Figure 8: Source of Water supply within the Ward - Community Based Planning Program 2017 (Data Collection)

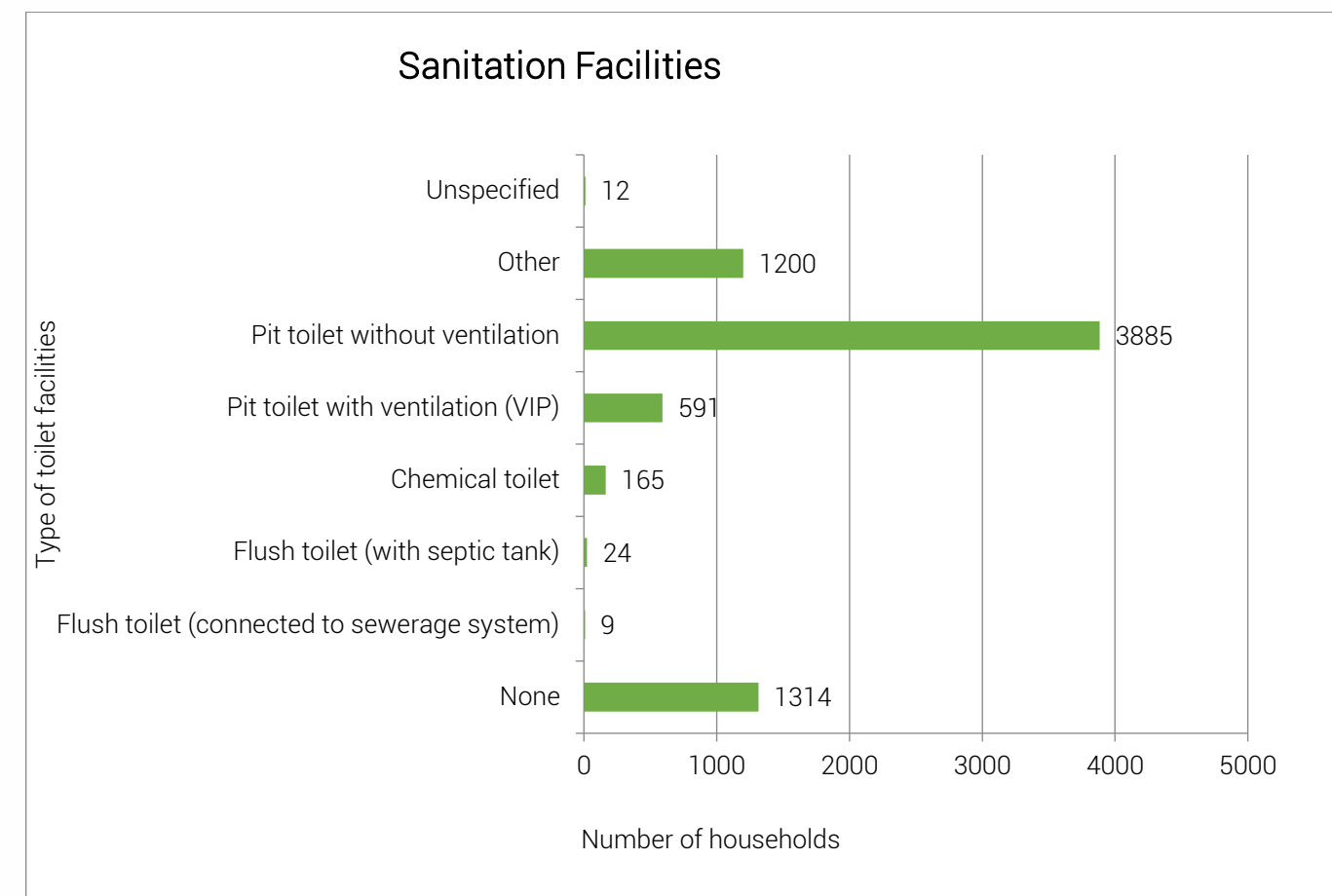


Figure 9: Access to Sanitation Facilities – Census 2011

5.3. Household Access to Sanitation

District Municipality (ANDM) currently provides sanitation to the Matatiele area. As per *Community Based Planning Program (Data Collection)* 6 villages have access to ventilated pit toilets within the whole ward. This shows there is still a large number of backlog with regards to the provision of sanitation as 7 villages have no access to ventilated pit toilets within this ward.

VILLAGE/LOCATION	VENTILATED PIT TOILETS	FLUSH TOILETS	Other
Tshisa	Yes		
Nkungwini	Yes		
Mrwabo	Yes		
Myemaneni	Yes		
Sidakeni	Yes		
Kesa	Yes		

Table 17: Household Access to Sanitation - Community Based Planning Program 2017 (Data Collection)

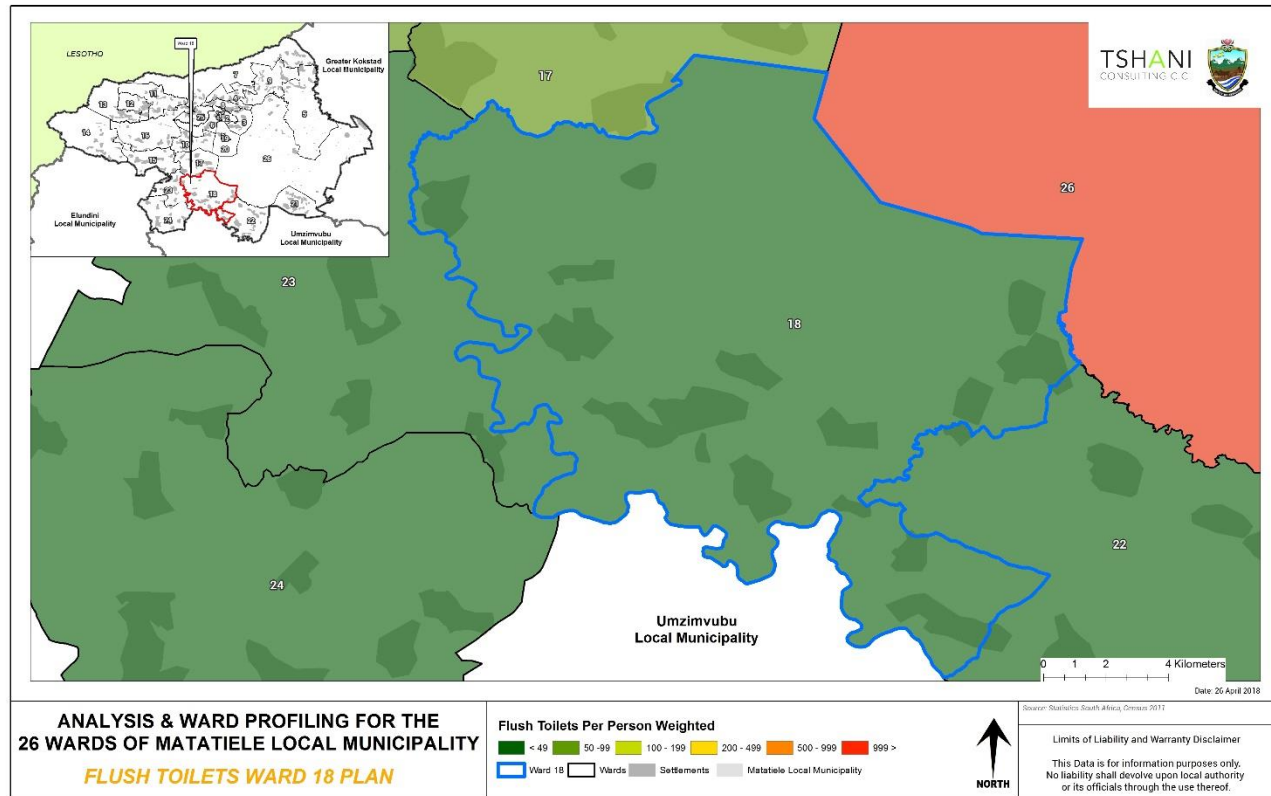


Table 18: Main Sources of Energy - Community Based Planning Program 2017 (Data Collection)

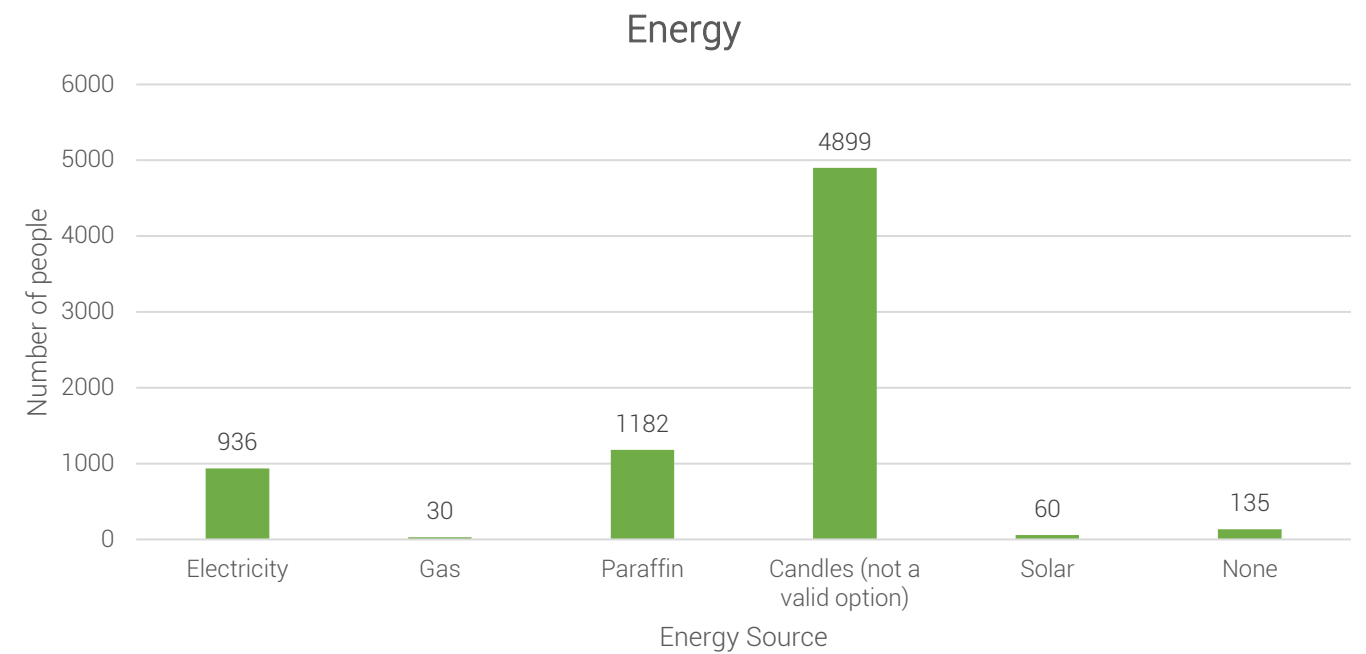


Figure 10: Source of Energy within the Ward - Census 2011

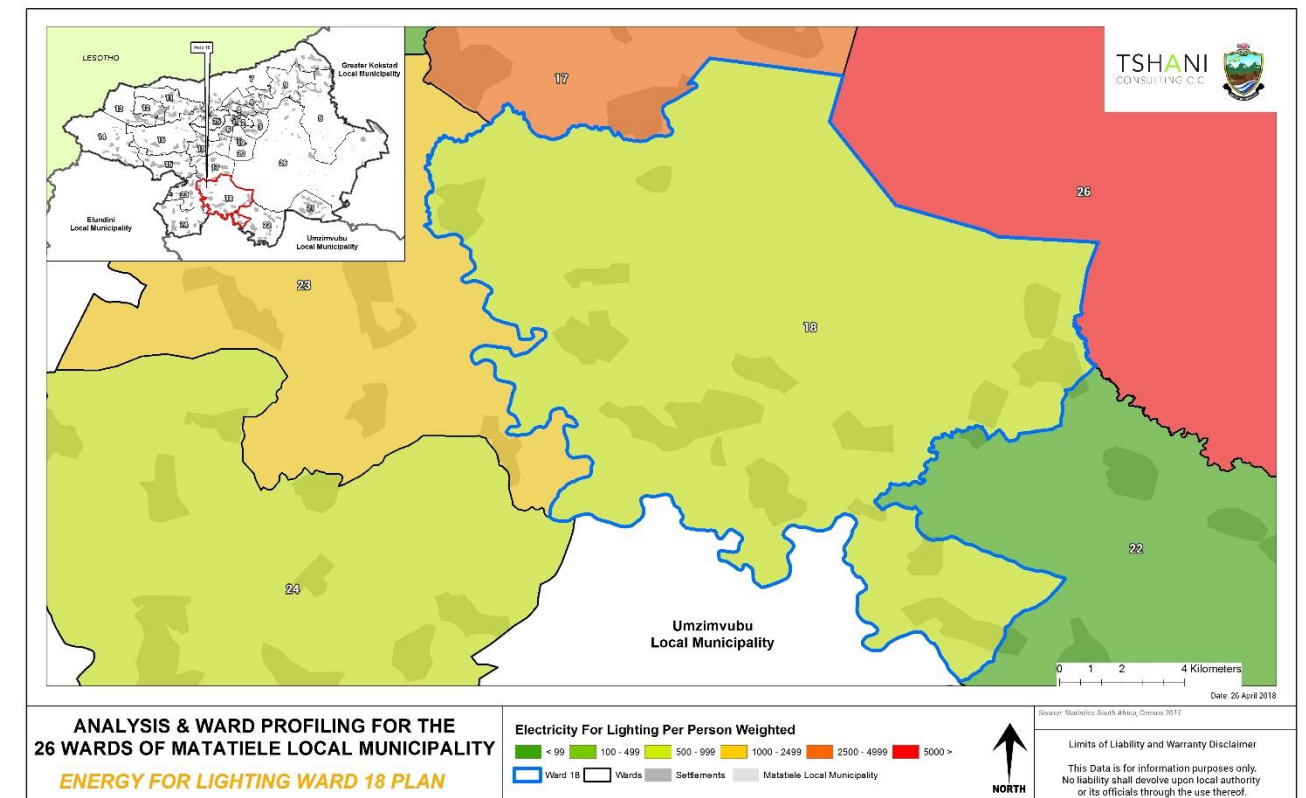
Plan 4: Access to Sanitation Facilities – Census 2011

5.4. Main Source of Energy

Out of 13 villages only two (2) villages have electricity which is Tshisa and even though Bubesi is still (on progress). The rest of the ward use solar for lighting and majority of the people within the ward use gas, wood and paraffin for purposes of cooking.

The local municipality should encourage the community to use solar energy and assist the process by educating communities of renewable energy.

VILLAGE/LOCATION	ELECTRICITY	SOLAR	NO ELECTRICITY/SOLAR
Tshisa	✓		
Bubesi	On progress	✓	
Moyeni		✓	
Hillside		✓	
Nkalweni		✓	
Nkungwini			
Zipampini			
Qili			
Mrwabo			
Myemaneni			
Sidakeni			
Fiva			



Plan 5: Access to electricity for Lighting within the Ward - Census 2011

5.5. Roads and Bridges

The roads and bridges located within Ward 18 are mostly in bad condition and in need of maintenance. The plan below picks up on the extent of roads networks which are present within he ward.

NAME AND TYPE	AREAS COVERED	CONDITION OF THE ROADS
Sidakeni A/R	Sidakeni	In bad condition
Nkungwini A/R	Nkungwini	In bad condition
Fiva A/R	Fiva	In bad condition
DR 08015 T-15	Tshisa to Kesa	In bad condition
Mrwabo A/R	Mrwabo	In bad condition
Mashu A/R	Mashu-Bhubesi	In bad condition
Tshisa	Tshisa	In bad condition
Sidakeni A/R	Sidakeni	Fair

Table 19:Roads and Bridges within Ward - Community Based Planning Program 2017 (Data Collection)

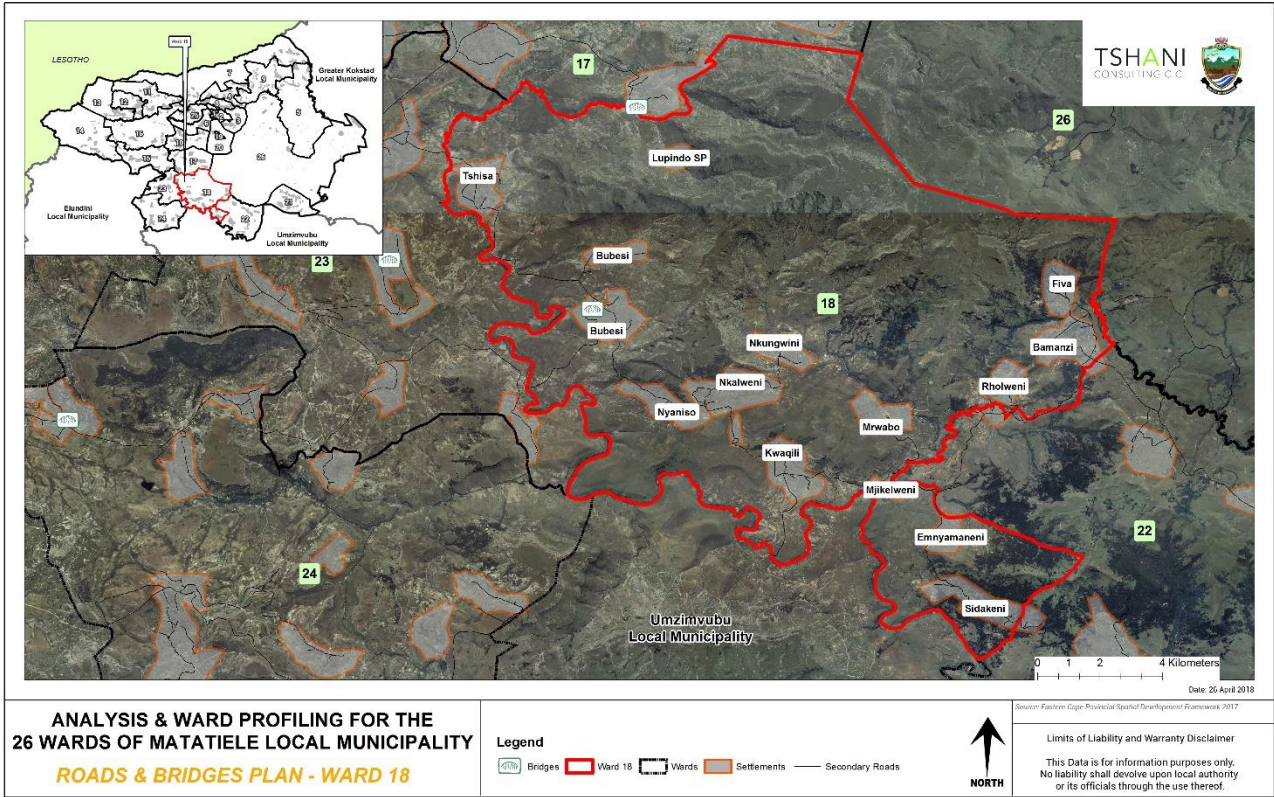
6. Current Projects

There are no current projects noted within the ward.

7. Ward Needs and Priorities

The need and priorities which have been identified need to be prioritised in the municipal SDF and other local plans created. The projects range from short to long term projects and have been further broken down in the implementation plan.

VILLAGE/LOCATION/ SUB AREA	NEEDS IDENTIFIED
Tshisa	Extension of access road, water, sports field, clinic, RDP Houses, Pre-School, Pedestrians Crossing
Bubesi	Access road, electricity, water and sanitation, water dam for farmers, RDP Houses, community hall, sports gound, Library, Police station, Network Pole, funding of coops
Mashu	Access road, electricity, water and sanitation, water dam for farmers, RDP Houses, community hall, sports ground, Library, Police station, network pole, funding of coops
Moyeni	Electricity, water, sanitation, sports field, access road, RDP Houses, Tribal authority facility
Hillside	Electricity, water, sanitation, sports field, access road maintenance, RDP Houses, Community Hall, shearing shed
Nkungwini	Water, Network, access road, electricity, job opportunities, pre-school, Community hall
Zipampirini	Electricity, water, sanitation, sports field, RDP Houses
Qili	Electricity, addition of taps, sanitation, access road maintenance, RDP Houses, sport field, Agricultural activities funding, Coops funding Community Hall
Mrwabo	Access road maintenance and extension, electricity, RDP Houses, Network Pole, Sport Field
Myemaneni	Water, access road and bridge, electricity, RDP Houses, deforestation, Network Pole, Job Opportunities, Sport field maintenance, Pre-school maintenance
Sidakeni	Electricity, water, deforestation, DR08015 T- Road re-surfacing, Access road maintenance and extension, RDP Houses, Shearing shed, Sport field
Fiva	Electricity, Water, Sanitation, RDP Houses, Network Pole, Access Road Maintenance And Extension, Sports Field, Community Hall, Pre-School, Deforestation
Kesa	Water, access road, RDP Houses, Electricity, Wattle removal
Nkalweni	Electricity, water, sanitation, sport field road maintenance and extension, RDP Houses



Plan 6: Roads and Bridges within the Ward - MLM GIS

Table 20:Ward needs and Priorities - Community Based Planning Program 2017 (Data Collection)

8. Stakeholders within Ward

The table below illustrates the stakeholders which were engaged with during the Community engagement sessions.

NAME OF STAKEHOLDER	CONTACT PERSON AND TEL
Transport Forum	Mr. Mpendulo Rwairwai – 082 710 5632
Retired Teachers Association	Mr. E.Z Matandela – 071 617 4570
NGO NPO	Mrs. Nyokana – 076 022 6515

Table 21:Stakeholders Within Ward - Community Based Planning Program 2017 (Data Collection)

9. Social Challenges

The table below illustrates the social challenges which were identified during the Community engagement sessions. The ward has identified stock theft, drug and alcohol abuse, rape, house breaking and unemployment as the key social challenges. Such challenges are a popular trend in areas with a high youthful population and limited employment opportunities. Various departments should be engaged to address such social challenges as they affect all villages within the ward.

CHALLENGES INDENTIFIED	AFFECTED AREAS	IMPACT
Stock Theft	All Villages	Causes unrest in the community, livestock owners incur loses and most animals are not recovered
Rape	All Villages	Unsafe community, No peace
Drugs and Alcohol	All Villages	Crime Rate
Unemployed	All Villages	People move to other places
Identity Documents	All Villages	Dropouts at school, No accessibility to Grants Unemployment

Table 22:Social Challenges Within Ward - Community Based Planning Program 2017 (Data Collection)

WARD 18	
INFRASTRUCTURE PRIORITIES	SOCIO- ECONOMIC PRIORITIES
Electricity	Agricultural Activities Funding
Water and Sanitation	Coops Funding
RDP Houses	Water Dam For Farmers
DR 08015 T-Road maintenance (Tarred)	Fencing of Grazing land
Network Pole	Protection of live stock